

Changing SMTP Port 25 to Port 465 or 587 in Tufts Supported Mail Clients

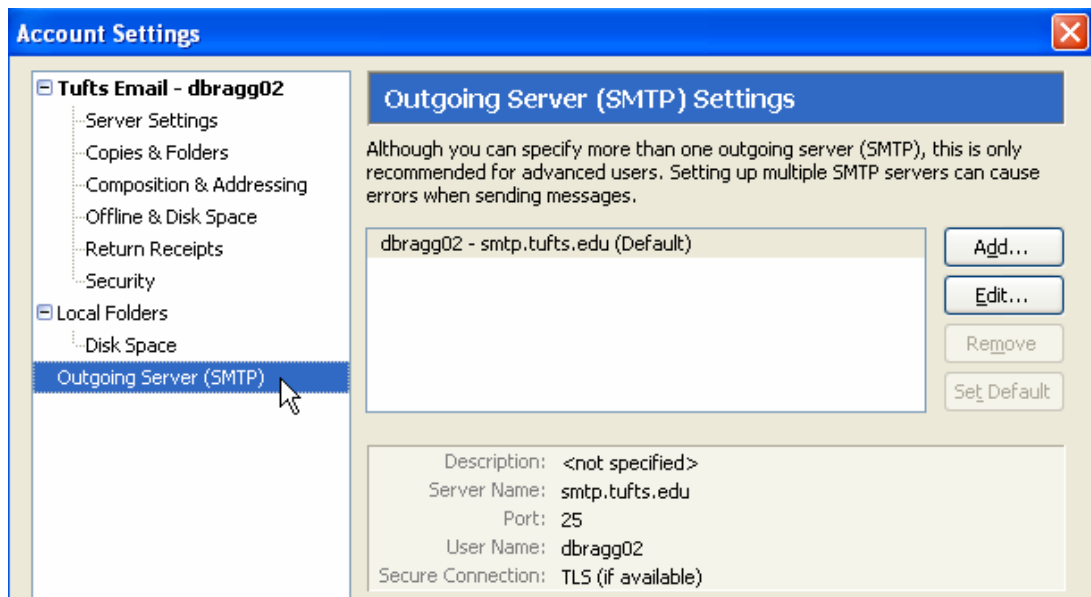
The following document outlines the steps necessary to change SMTP outgoing mail port from 25 to 465 or 587.

In an effort to meet the standards of a growing number of Internet service providers and mobile wireless providers, UIT has made authenticated SMTP mail possible on port 587 and 465 for Trumpeter email users. This will help alleviate some of the problems our users have experienced when attempting to send email from outside the university to hosts that require both encryption and authentication.

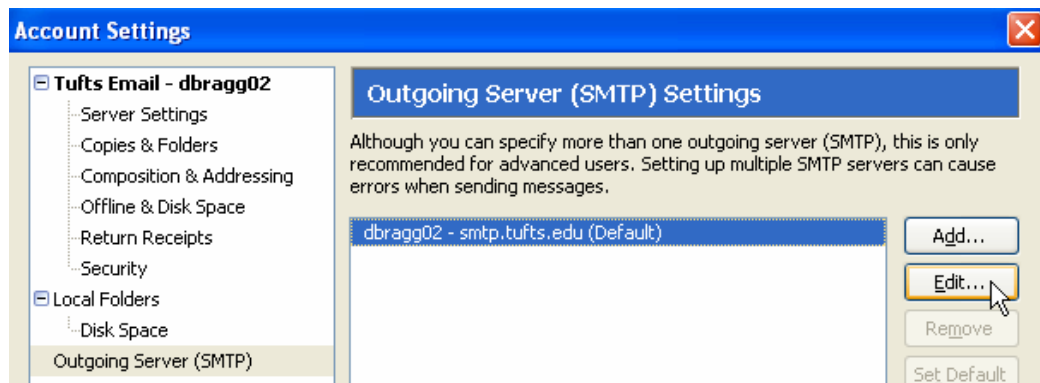
Changing SMTP Port 25 to Port 587 in Thunderbird.....	2
Changing SMTP Port 25 to Port 465 in Microsoft Outlook for non-Exchange (IMAP) users.....	4
Changing SMTP Port 25 to Port 465 in MS Outlook Express for non-Exchange (IMAP) users.....	7
Changing SMTP Port 25 to Port 587 in Eudora.....	9
Changing SMTP Port 25 to Port 587 in Entourage for non-Exchange (IMAP) users	11
Changing SMTP Port 25 to Port 587 in Mail.app on a Mac.....	13

Changing SMTP Port 25 to Port 587 in Thunderbird

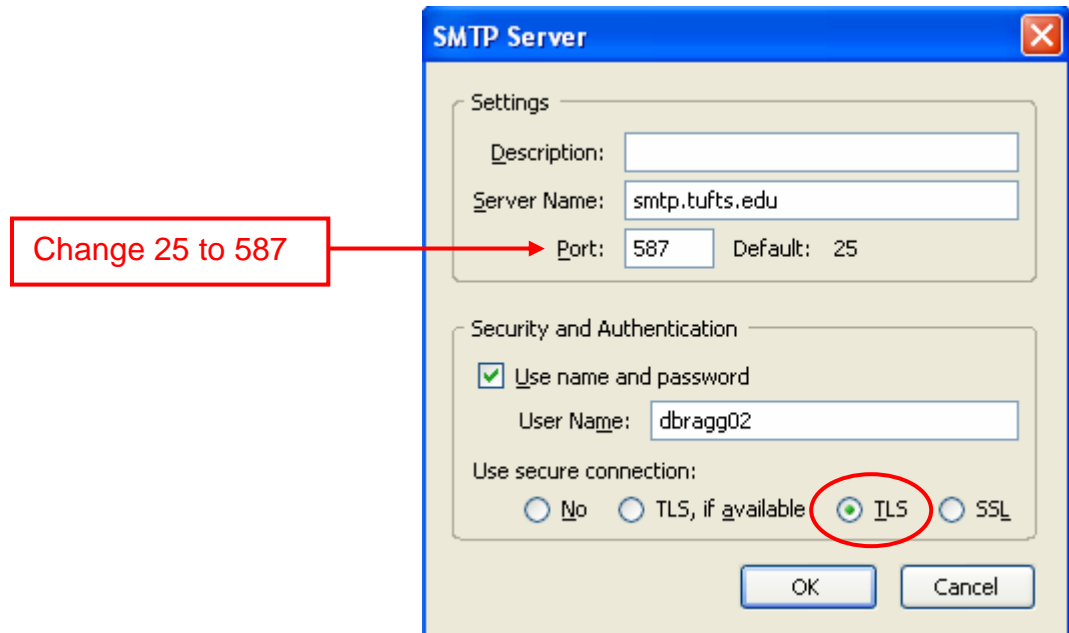
1. From the Thunderbird toolbar, select **Tools > Account Settings**. *The Account Settings window opens.*
2. In the Account Settings window, in the left column, **select Outgoing Server (SMTP)**. *The Outgoing Server (SMTP) Settings display.*



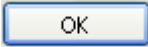
3. **Select the account** (e.g. imap.tufts.edu or Tufts Mail) and **click Edit...**. *The SMTP Server window opens.*

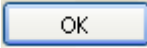


4. In the Settings area, in the Port field, **change 25 to 587**.



5. In the Use secure connection field, **select the TLS option**.

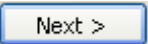
6. When you are finished, **click** . *The SMTP Server window closes.*

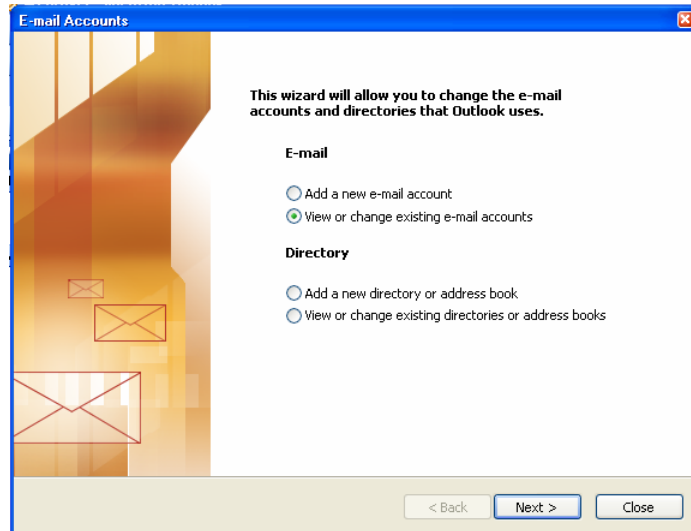
7. In the Account Settings window, **click** . *The Account Settings window closes and the SMTP port is changed.*


Once the SMTP port is changed, the user may be prompted for their password the next time they send an outgoing email.

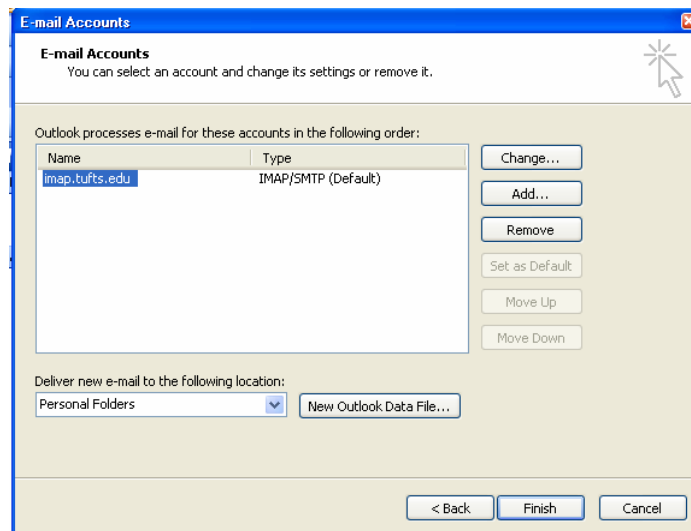
Changing SMTP Port 25 to Port 465 in Microsoft Outlook for non-Exchange (IMAP) users

1. From the Outlook toolbar select, **Tools > E-mail Accounts**. *The E-mail Accounts Wizard screen appears.*

2. Verify that “**View or change existing e-mail account**” radio button is selected and click . *The E-mail accounts window appears listing all Outlook email accounts on this computer.*



3. Under “Outlook processes e-mail for these accounts in the following order:”, **highlight the IMAP/SMTP account** (e.g. `imap.tufts.edu` or Tufts Mail) and click . *The Internet E-mail Settings (IMAP) window appears.*



4. In the Internet E-mail Settings (IMAP) window, **click**

More Settings ...

The Internet E-mail Setting window appears with a number of tabs.

E-mail Accounts

Internet E-mail Settings (IMAP)
Each of these settings are required to get your e-mail account working.

User Information
Your Name:
E-mail Address:

Server Information
Incoming mail server (IMAP):
Outgoing mail server (SMTP):

Logon Information
User Name:
Password:
 Remember password

Log on using Secure Password Authentication (SPA)

More Settings ...

< Back Next > Cancel

5. In the Internet E-mail Settings window **click the Advanced tab** and under Server Port Numbers, next to Outgoing server (SMTP), **change 25 to 465.**

Change 25 to 465.

Internet E-mail Settings

General Outgoing Server Connection **Advanced**

Server Port Numbers

Incoming server (IMAP): Use Defaults

This server requires an encrypted connection (SSL)

Outgoing server (SMTP):

This server requires an encrypted connection (SSL)

Server Timeouts

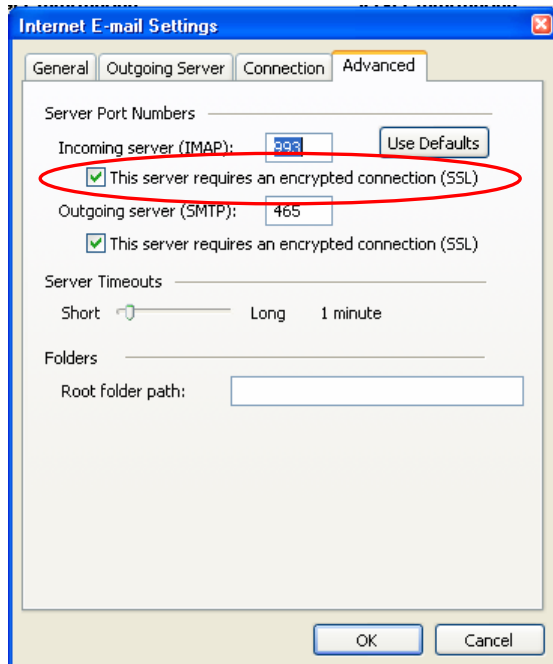
Short: Long: 1 minute

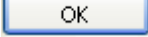
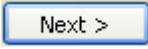

Folders

Root folder path:

OK Cancel

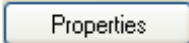
6. Verify that "This server requires an encrypted connection (SSL)" is checked.

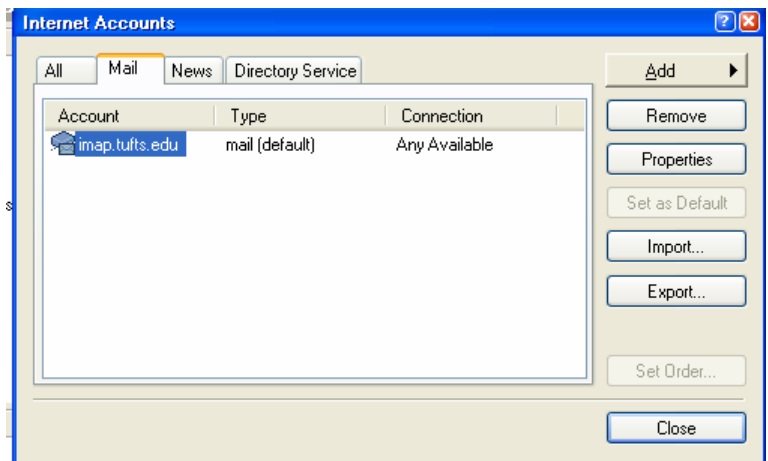


7. When you are finished, **click** . *The Internet E-mail Settings (IMAP) window reappears.*
8. In the Internet E-Mail Settings (IMAP) window **click** . *The E-mail accounts window appears listing all Outlook e mail accounts on this computer.*
9. In the E-Mail accounts window, **click** . *The E-mail Accounts Wizard screen closes and the SMTP port is changed.*

Changing SMTP Port 25 to Port 465 in MS Outlook Express for non-Exchange (IMAP) users

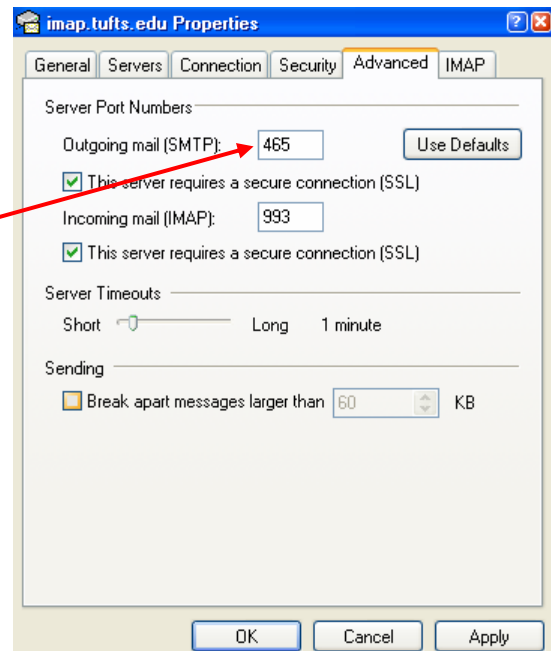
1. From the Outlook express toolbar, select **Tools > Accounts**. The *Internet Accounts window* appears.

2. In the Internet Accounts window, on the Mail tab, **highlight the IMAP/SMTP account** (e.g. imap.tufts.edu or Tufts Mail) and **click** . The *Properties window for Internet Mail Account* appears.

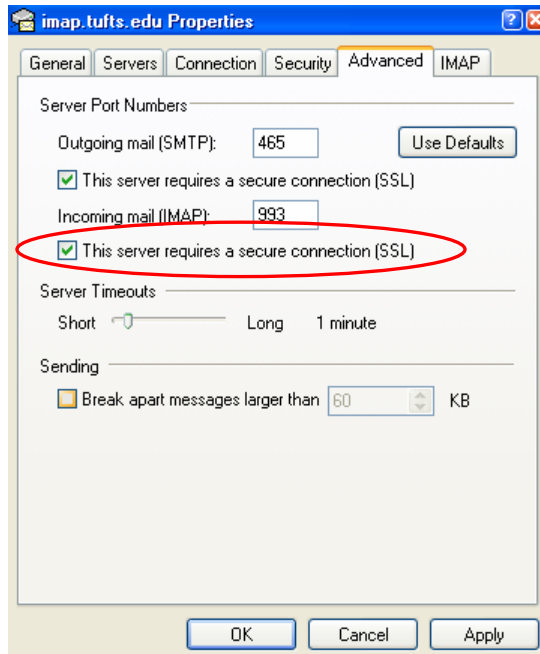


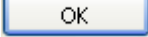
3. In the Properties window, **click the Advanced tab** and under Server Port Numbers, next to Outgoing mail (SMTP), **change 25 to 465**.

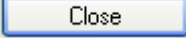
Change 25 to 465.



4. Verify that "This server requires a secure connection (SSL)" is checked.

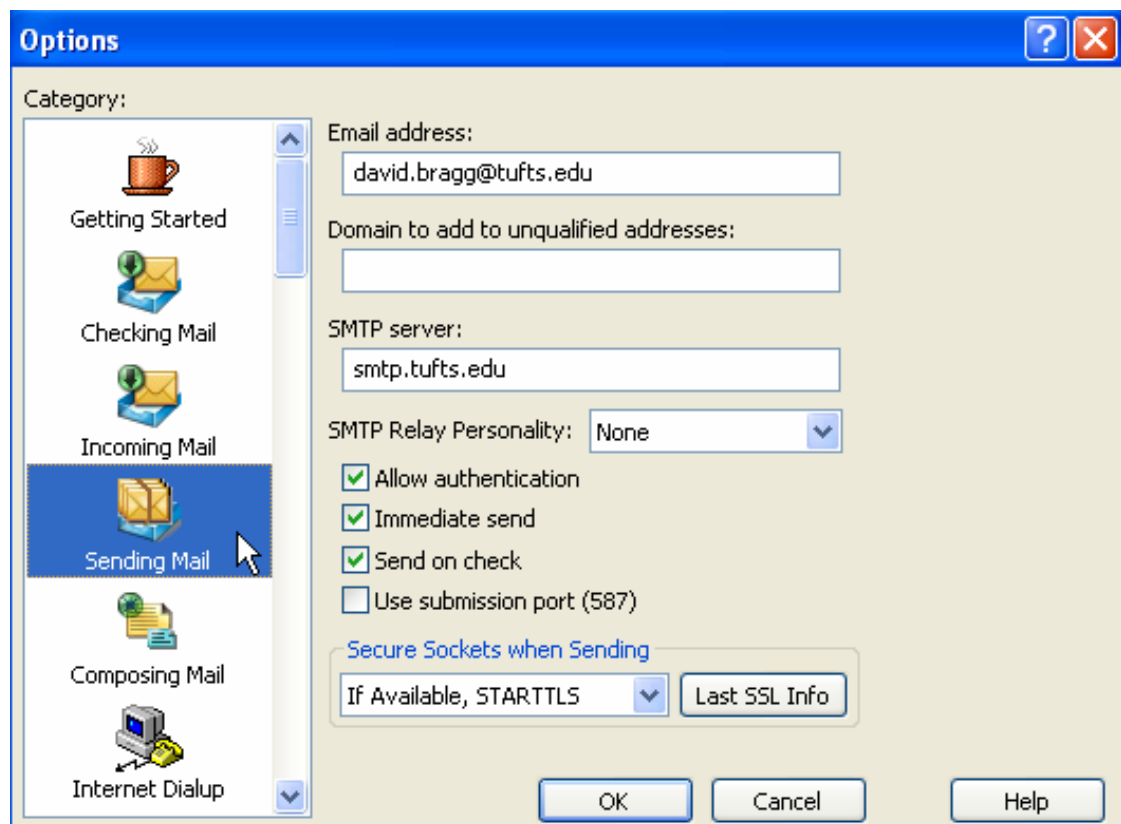


5. When you are finished, **click** . *The Internet Accounts window reappears.*

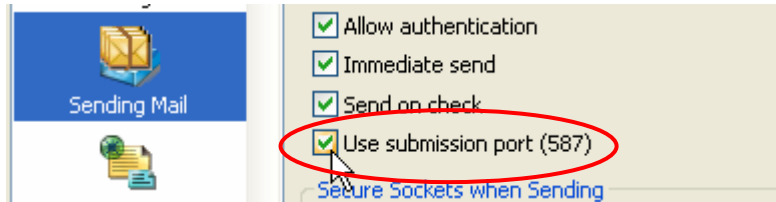
6. In the Internet window, **click** . *The Internet Accounts window closes and the SMTP port is changed.*

Changing SMTP Port 25 to Port 587 in Eudora

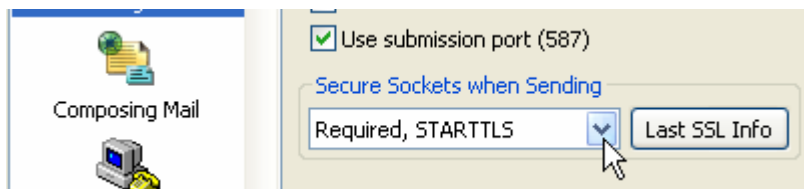
1. **From the Eudora toolbar, select Tools > Options.** *The Options window opens.*
2. In the Options window, in the left Category column, **click Sending Mail.** *The Sending Mail settings display.*

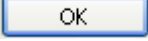


3. In the area with checkboxes, place a check in the **Use submission port (587)**.



4. In the Secure Sockets when Sending field, **select Required, STARTTLS**.



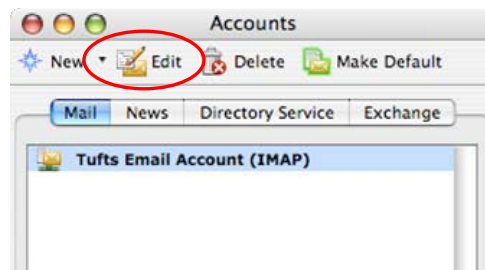
5. At the base of the window, **click** . *The Options window closes.*

These steps were written for Eudora 7, so the steps may vary based on your version of Eudora.

Changing SMTP Port 25 to Port 587 in Entourage for non-Exchange (IMAP) users

1. From the Entourage toolbar, select **Tools > Accounts**. *The Accounts window appears.*

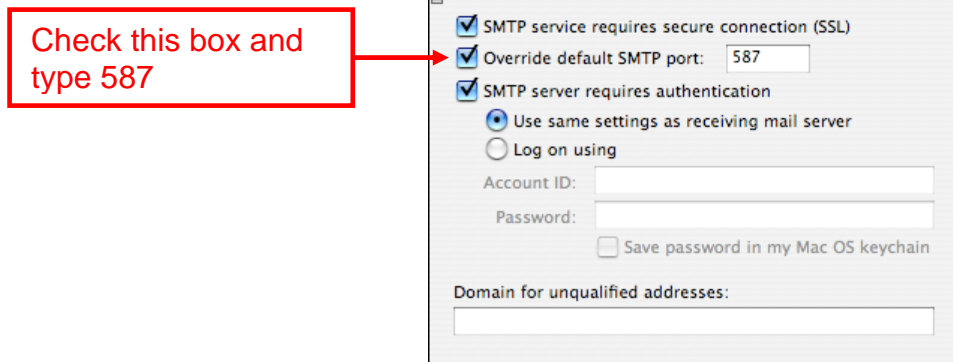
2. In the Accounts window “, **highlight the mail account** (e.g. imap.tufts.edu or Tufts Mail) and **click Edit**. *The Edit Account window appears.*



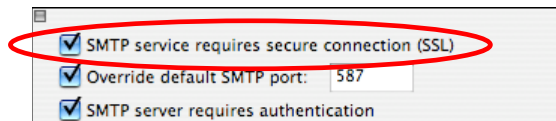
3. In the Edit Account window, **select “Click here for advanced sending options.”** *The advanced sending options window appears.*



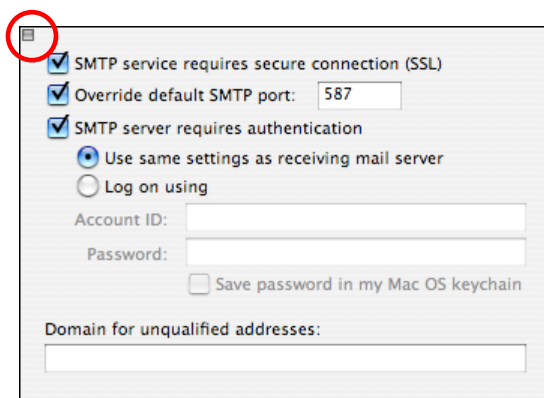
4. In the advanced sending options window, **check the box next to "Override default SMTP port:"** and **change 25 to 587.**



5. Verify that "SMTP service requires secure connection (SSL)" is checked



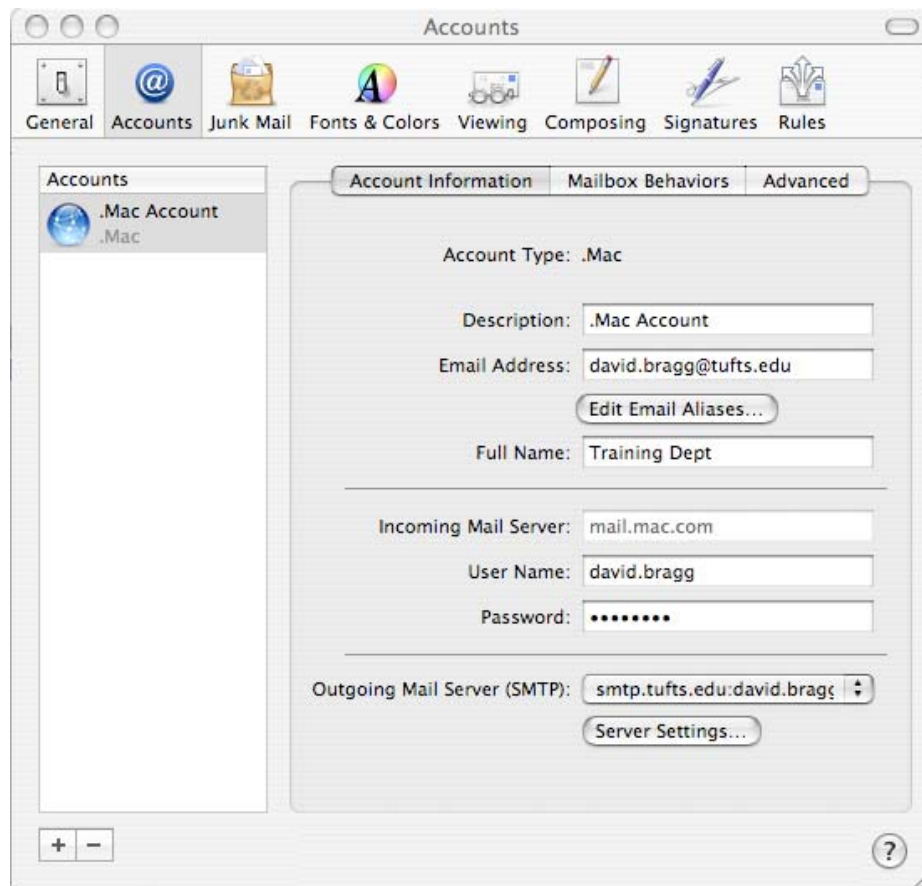
6. When you are finished, **click the square box in the upper left hand corner to close the advanced sending options window.** *The advanced sending options window closes and the Edit Account window reappears.*



7. In the Edit Account window, **click OK.** *The Edit Account window closes.*

Changing SMTP Port 25 to Port 587 in Mail.app on a Mac

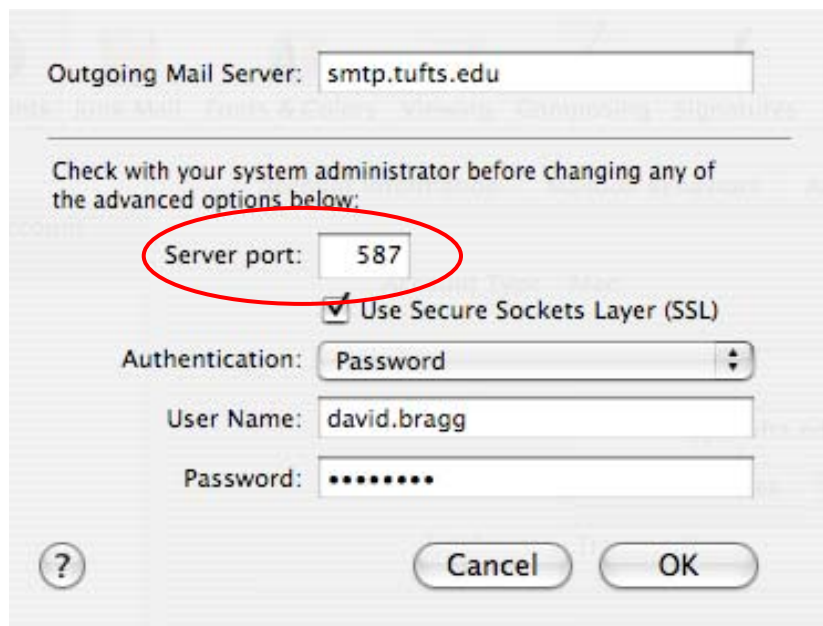
1. From the Mail toolbar, **select Mail > Preferences**. *The Accounts window opens.*
2. **Select the Accounts tab.**



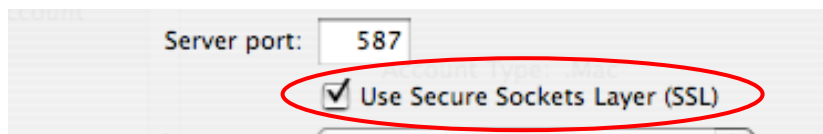
3. At the base of the window, in the Outgoing Mail Server (SMTP) field, **click the Server Settings button**. A dropdown window opens.



4. In the Server Port field, **change the 25 to 587**.



5. Verify that "Use Secure Sockets Layer (SSL)" is checked.



6. **Click OK**. The window closes.
7. **Close the Accounts window** also.